

# Cnidarians

---

---

---

---

---

---

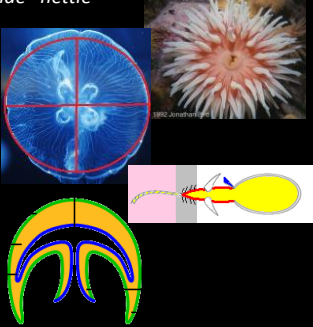
---

---

## Phylum Cnidaria

*Knide "nettle"*

- Radial symmetry
- Central mouth surrounded by tentacles
- Single opening
- Stinging cells



---

---

---

---

---

---

---

---

## Phylum Cnidaria

*Anthozoa*  
*Antho + zoa = "flower + animal"*  
Exclusive marine polypoid (no medusa)  
ANEMONES AND CORALS



*Syphozoa*  
*Syphos + zoa = "deep wine-cup + animal"*  
JELLIES

---

---

---

---

---

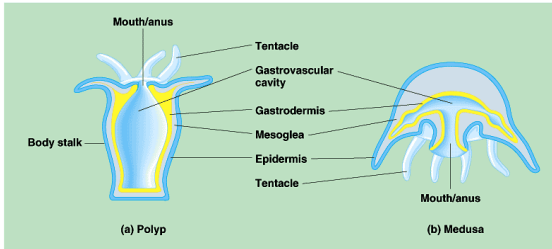
---

---

---

## Class Scyphozoa: Anatomy

- Same basic anatomy as other Cnidarians



Copyright © Pearson Education, Inc., publishing as Benjamin Cummings.

---

---

---

---

---

---

---

---

## Class Scyphozoa: Anatomy




---

---

---

---

---

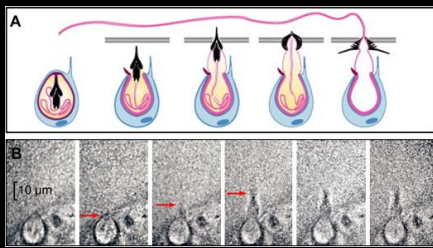
---

---

---

## Cell Types: Cnidocytes

- Secretes nematocysts: Up to 30 types!
  - Specialized cells used to stun and trap prey, as defense, or as an adhesive




---

---

---

---

---

---

---

---

### Order Scleractinia: Morphology

Dependent on polyp, growth rate and mode of reproduction

- Massive
- Columnar
- Encrusting
- Branched
- Foliaceous
- Laminar
- Free-living



---

---

---

---

---

---

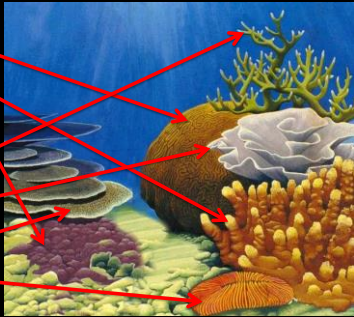
---

---

### Order Scleractinia: Morphology

Dependent on polyp, growth rate and mode of reproduction

- Massive
- Columnar
- Encrusting
- Branched
- Foliaceous
- Laminar
- Free-living



---

---

---

---

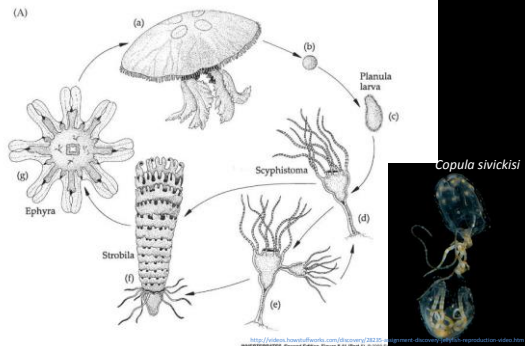
---

---

---

---

### Class Scyphozoa: Reproduction



---

---

---

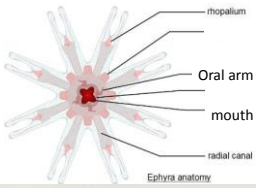
---

---

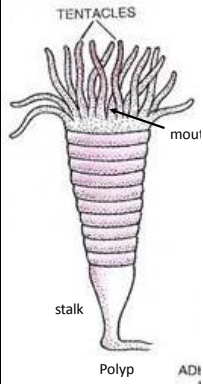
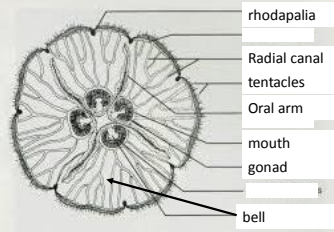
---

---

---



Ephyra anatomy



Polyp ADI

---

---

---

---

---

---

---

---