

# Mollusca

---

---

---

---

---

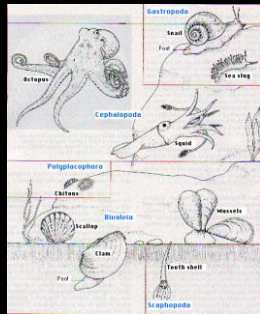
---

---

# Mollusca

*"Molluscus" soft*

- Bilaterally symmetrical
- Open circulatory system (hemocoel)
- Mantle and shells



---

---

---

---

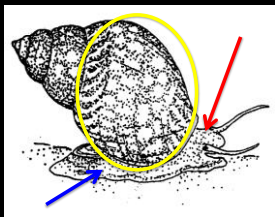
---

---

---

# Phylum Mollusca: External Anatomy

- **Head**
  - Sensory structures: e.g. eyes, statocysts, tentacles
- **Foot**
  - Muscle for movement
- **Visceral mass**



---

---

---

---

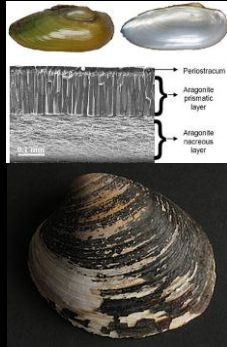
---

---

---

### Anatomy: Shell

- Can vary greatly!
- Solid calcareous shells
- 0, 1, 2, or 8 shells
- Coated with thin organic surface called periostracum



---

---

---

---

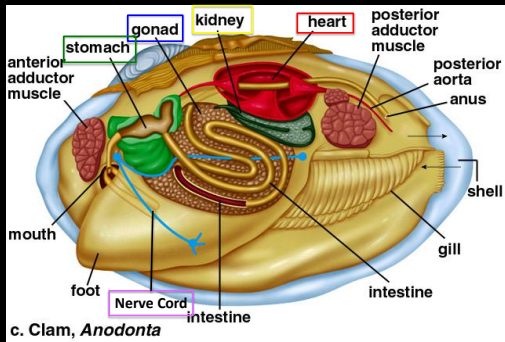
---

---

---

---

### Internal Anatomy: Bivalve



---

---

---

---

---

---

---

---